

An amoeba is unicellular and so it requires less oxygen than the rat to survive. In the amoeba the process of \_\_\_\_\_ is sufficient to supply its oxygen needs. The rat is a large multicellular animal, it requires \_\_\_\_\_ oxygen to survive and diffusion is not \_\_\_\_\_ to collect enough oxygen and get it to all the cells, so a rat needs a \_\_\_\_\_ system and a \_\_\_\_\_ system.

### Words to use:

transport  
more  
diffusion  
sufficient  
respiratory

Respiratory systems need to be:

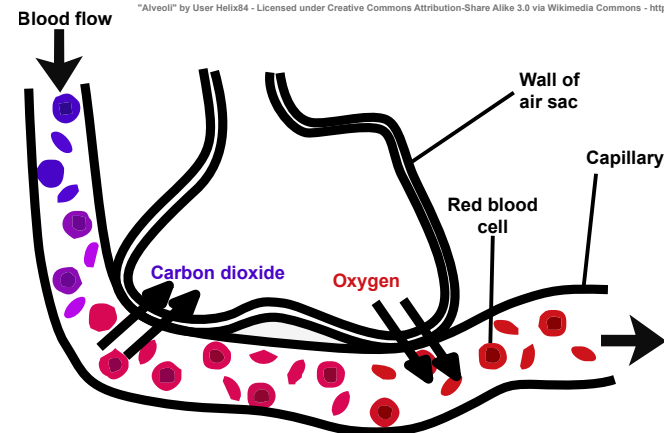
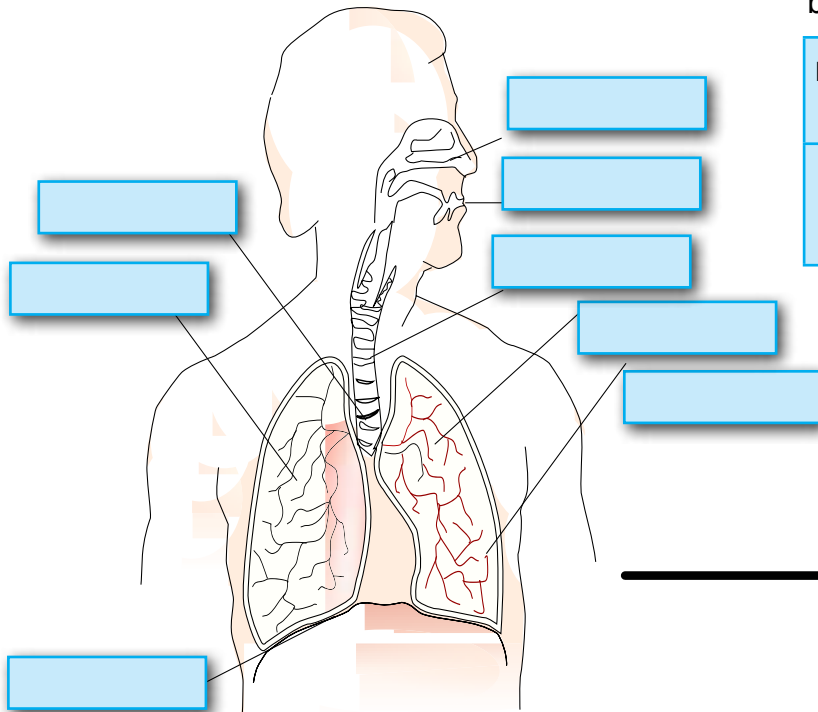
- 
- 
- 
- 

Use these words to complete the breathing flow chart.

Increases volume	Decreases volume	Increases pressure	Decreases pressure
Ribs up and out	Ribs down and in	Diaphragm flattens	Diaphragm domes

Breathing in

Breathing out



A Carcinogen is

---

---

---

---

---

---

# SMOKING

Substance	Carbon monoxide	Nicotine	Tar
Effect			

Diseases caused by smoking:

- 
- 
- 

Solve the anagrams and fill in the blanks below:

*rapsealys*    *steroyds*


Smoking \_\_\_\_\_ and \_\_\_\_\_ the cilia.

**Words to use:**

mechanism  
peer review  
correlation  
cause  
surveys

Doctors first noticed a \_\_\_\_\_ between smoking and lung cancer.

They investigated the link by carrying out many \_\_\_\_\_ and the results of these were checked by other scientists ( \_\_\_\_\_ ).

When the link was confirmed they started to look for a \_\_\_\_\_ of how smoking could \_\_\_\_\_ lung cancer.

20 Year Lag Time Between Smoking and Lung Cancer

