

River Conwy

Decision Making Exercise

Activity 1

Study the *Flood alleviation* worksheet which includes a diamond rank exercise. Complete the exercise.

Click on the link below to access an interactive version of the activity:

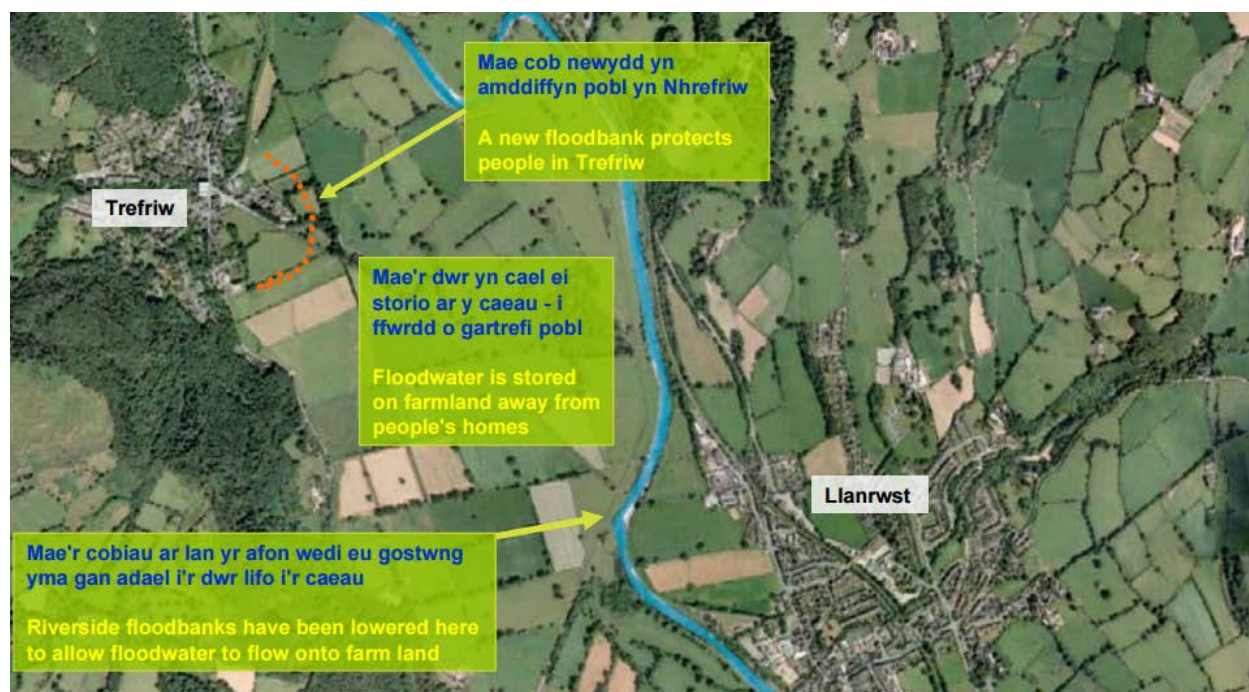
http://resource.download.wjec.co.uk.s3.amazonaws.com/vtc/2015-16/15-16_07/eng/flooding-conwy.html

Activity 2

Study the information below. It describes one way of managing flooding in the Conwy Valley.

Environment Agency Wales 2009

'Working with nature we have created a scheme to provide better protection from flooding. We did this by lowering part of the flood bank which acted as a bottleneck, which caused houses in Llanrwst to be flooded. This makes more space for the water by storing it on the natural floodplain of the valley floor. People in Trefriw are protected from this water by a new flood bank.'



Click on these links to find out more about this scheme.

<https://www.salixrw.com/solution/conwy-fas/>

<http://teamvanoord.com/downloads/MG023%20Conwy%20FAS.pdf>

DME task

To what extent do you think that this was the best way to alleviate flooding in the Conwy Valley?

(a) Construct an argument that supports this decision.

You should consider the positive aspects of the scheme including benefits to people, economy and environment.

(b) Construct a counter-argument.

(i) You should consider any negative aspects of the scheme such as cost, or negative impacts further downstream.

(ii) You could suggest an alternative scheme. If so, you must explain carefully why you think your flood alleviation scheme is better.

(c) Qualify your argument.

This means that you weigh up the positives against the negatives of the scheme.

Conclude your decision by stating whether, based on the evidence, you agree or disagree with the scheme.