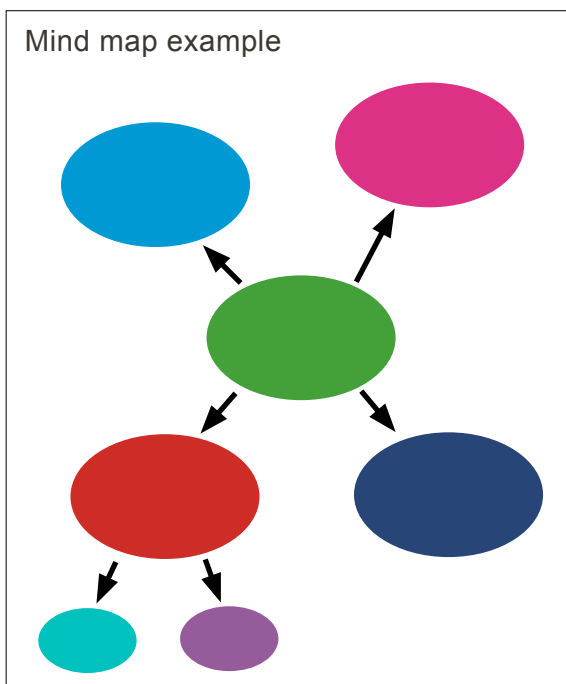


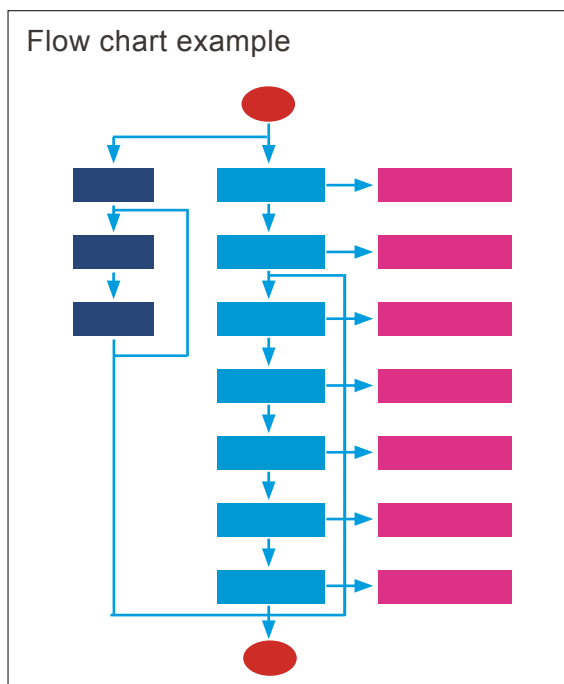
# Make a Mind Map

A mind map should have a starting point and a finishing point, and then the stages in between should be possible to back up with reasons. Below are some of the key terms in situation ethics. Try placing them in an order that makes sense to you, and which you can justify, as a flow diagram (or mind map). Look up any words you don't understand.

Mind map example



Flow chart example



## Key terms in situation ethics

Four working principles	Six fundamental principles	Agape love	Pragmatism
Positivism	Personalism	Relativism	One intrinsic good, love
Love equals justice	Loving ends justify means	Love the ruling norm of Christianity	Love decides case by case
Love for all	Situationism	Legalism	Antinomianism